

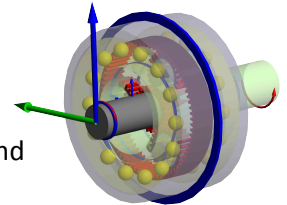
SystemManager to Calculate Complete Systems

SystemManager

SystemManager software allows for a fast and easy design of complete systems of machine elements, such as multi-stage or manual gearboxes. The individual system elements are linked to the eAssistant/TBK 2014 calculation modules. Complex systems, such as

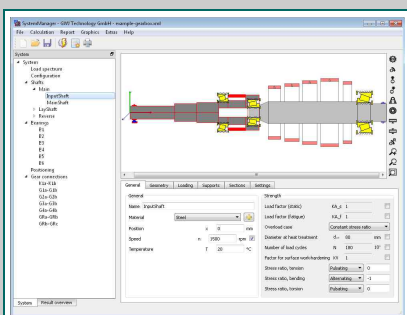
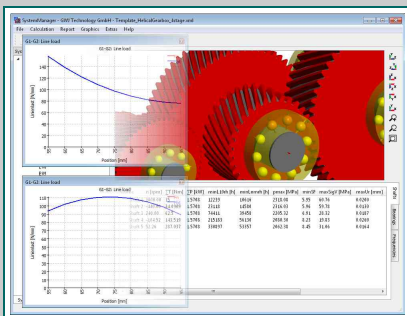
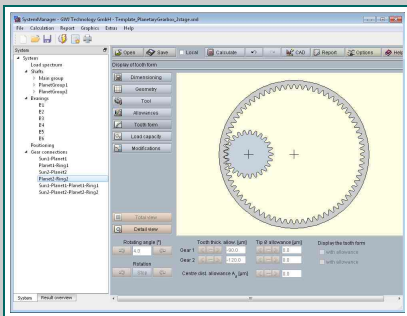
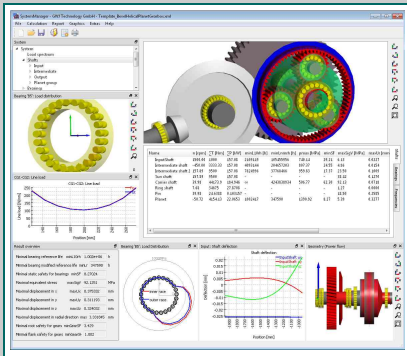
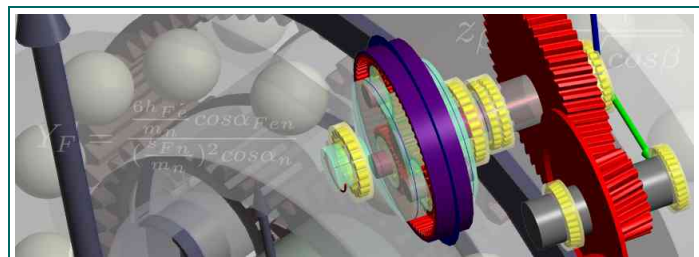
- multi-shaft systems coupled with gears,
- axially parallel shaft systems for multi-stage cylindrical gears,
- concentric shaft systems for planetary gear trains,
- coaxial shafts,
- perpendicular shaft systems

can be configured and calculated without much effort and with just a few mouse clicks.



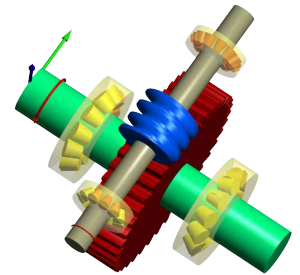
Direct Connection to eAssistant/TBK 2014

- Integrated shaft calculation for deflection and bearing forces taking nonlinear bearing stiffness of rolling bearings into account
- Strength calculation of shafts via eAssistant/TBK 2014 shaft module
- Integrated rolling bearing calculation to determine the nominal and extended rating life according to DIN ISO 281 including rolling bearing database and lubricant database.
- Gear calculation via eAssistant/TBK 2014 gear and planetary gear train module
- Load spectra can be defined on system level, bearings and gears will be calculated with the given load spectrum.



What SystemManager Can Do

- User interface provides overview over gear safeties and bearing life.
- Different switch positions can be defined, consideration of switch positions in load spectrum calculation.
- Load distribution along the facewidth gives an indication of required tooth trace corrections.
- Eigenfrequencies can be calculated on system level including coupling of torsional and bending modes.
- Mode shafts are animated in 3-D for easier identification of modes.
- Rolling bearing calculation with consideration of inner bearing geometry to calculate nominal and extended reference life.
- Different result graphics/diagrams, presentation of power flow in 3-D, ...
- Perpendicular shaft systems with connection to bevel gear and worm gear module



Clever Solutions Under One Roof

Focusing on mechanical engineering, GWJ Technology, headquartered in Braunschweig, Germany, stands for high quality products and innovative software development. With keen insight and high energy, we put our utmost efforts, skills, knowledge and passion into our work to achieve top quality products.

In addition, we also share our knowledge and insights through regular seminars, workshops and engineering services.

See For Yourself!

For further information, please feel free to contact us by phone +49 (0) 531 129 399-0 or email info@gwj.de. If you would like to learn more about our products, please do not hesitate to contact us for a free web presentation.

