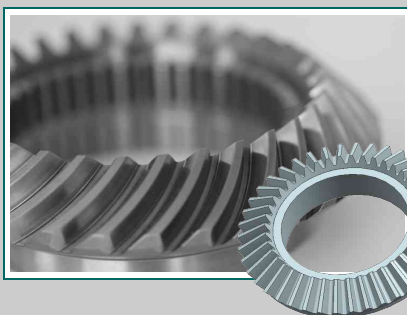
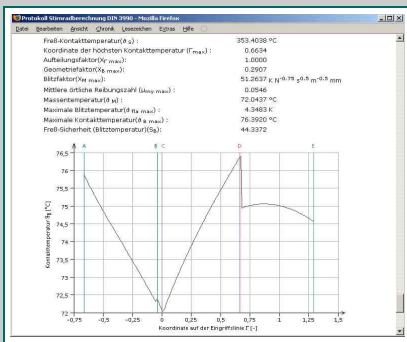
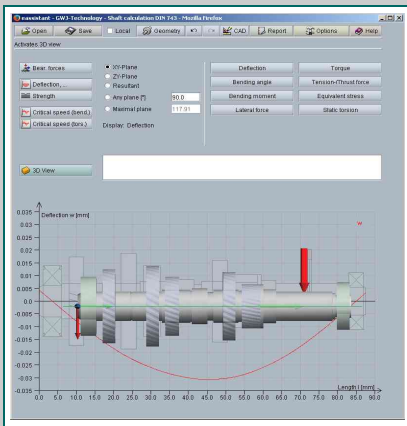
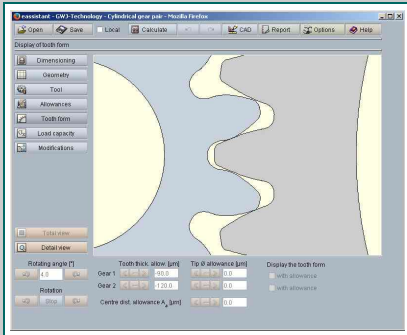


## eAssistant Purchase Order Form



### Hour Packages without / with 3D CAD Plugin

<input type="checkbox"/> 10 Hours	340 EUR	<input type="checkbox"/> 10 Hours with CAD Plugin	490 EUR
<input type="checkbox"/> 30 Hours	830 EUR	<input type="checkbox"/> 30 Hours with CAD Plugin	1,260 EUR
<input type="checkbox"/> 50 Hours	1,200 EUR	<input type="checkbox"/> 50 Hours with CAD Plugin	1,875 EUR
<input type="checkbox"/> 100 Hours	1,920 EUR	<input type="checkbox"/> 100 Hours with CAD Plugin	3,195 EUR

Please select the 3D CAD Plugin/ Module that fits your CAD system:

- SOLIDWORKS  
  Solid Edge  
  Autodesk Inventor  
  STEP/IGES

### Flat Rate Account without 3D CAD Plugin

- 1-Month Package 200 EUR / 65 EUR\*
  - 6-Months Package 660 EUR / 100 EUR\*
  - 12-Months Package 1,190 EUR / 135 EUR\*
- Valid only for 12-Months Package: Automatic renewal of 12-Months Package for another year. Package can be terminated by giving three month's written notice.

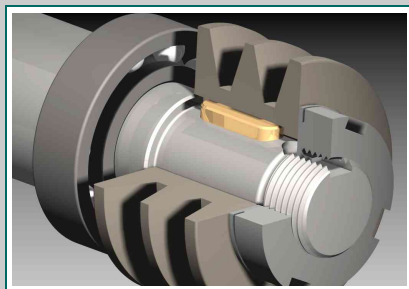
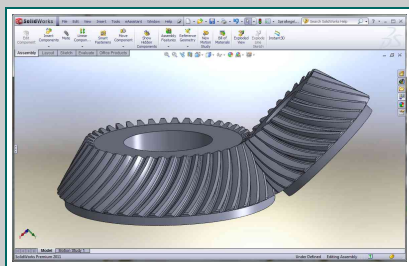
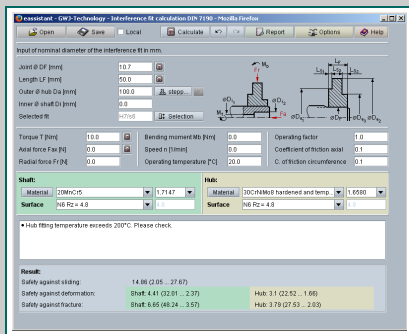
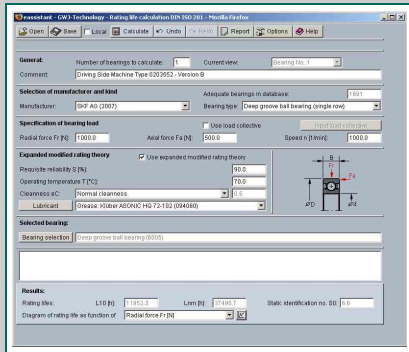
**\*Please Note:** Price for booking an additional flat rate account (e.g., book a flat rate for one month and pay 200 EUR. Book an additional account in the same month and pay only 65 EUR for this account. Two users can then work at the same time.)

### Flat Rate Account with 3D CAD Plugin

Please select the 3D CAD Plugin/Module that fits your CAD system:

- SOLIDWORKS  
  Solid Edge  
  Autodesk Inventor  
  STEP/IGES
- 1-Month Package with CAD Plugin 255 EUR / 100 EUR\*
  - 6-Months Package with CAD Plugin 990 EUR / 150 EUR\*
  - 12-Months Package with CAD Plugin 1,840 EUR / 200 EUR\*
- Valid only for 12-Months Package: Automatic renewal of 12-Months Package for another year. Package can be terminated by giving three month's written notice.

**\*Please Note:** Price for booking an additional flat rate account (please see above for further information)



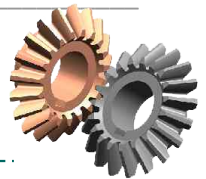
## eAssistant SystemManager as Rental Option

- Basic Version 1,600 EUR\*
- Premium Version 2,060 EUR\*
- Add-On Option: Rolling Bearings (Inner Geometry)
  - Basic Version 570 EUR\*
  - Full Version 840 EUR\*
- Add-On Option: Eigenfrequencies 380 EUR\*
- Add-On Option: 3D Elastic Parts 1,070 EUR\*

**\*Please Note:** \*Single user license, price per year for one account incl. maintenance, network floating license, leasing and workshops on request, eAssistant 12-Months Package package is required.

**These prices are indicated in EURO. All prices are strictly net and exclusive of value added tax. Prices are valid from 01.05.2019, prices are valid for all countries in EU, other countries on request.**

Total Sum Strictly Net: \_\_\_\_\_



## Contact Details

Company: \_\_\_\_\_

Contact Person: \_\_\_\_\_

Street: \_\_\_\_\_

Postcode /City: \_\_\_\_\_

Telephone: \_\_\_\_\_

Fax: \_\_\_\_\_

Email: \_\_\_\_\_

Username Test Account: \_\_\_\_\_

VAT Reg. No.: \_\_\_\_\_

**Yes, I have read and agree to the Terms and Conditions!**

City /Date

Signature /Stamp

**Fill in and fax your order to +49 (0) 531 129 399-29  
or send by email to info@gwj.de**